



Oxford Cambridge and RSA

Thursday 13 June 2019 – Morning

A Level Biology B (Advancing Biology)

H422/02 Scientific literacy in biology

Time allowed: 2 hours 15 minutes



You must have:

- the Insert (inserted)

You may use:

- a scientific or graphical calculator
- a ruler (cm/mm)



Please write clearly in black ink. **Do not write in the barcodes.**

Centre number

--	--	--	--	--

Candidate number

--	--	--	--

First name(s)

Last name

INSTRUCTIONS

- The Insert will be found inside this document.
- Use black ink. You may use an HB pencil for graphs and diagrams.
- Answer **all** the questions.
- Where appropriate, your answers should be supported with working. Marks may be given for a correct method even if the answer is incorrect.
- Write your answer to each question in the space provided. If additional space is required, use the lined page(s) at the end of this booklet. The question number(s) must be clearly shown.

INFORMATION

- The total mark for this paper is **100**.
- The marks for each question are shown in brackets [].
- Quality of extended responses will be assessed in questions marked with an asterisk (*).
- This document consists of **28** pages.

2

Answer **all** the questions.

1 This question is based on the Advance Notice article '**Learning from Iceland's model for genetic research**' in the **Insert**.

(a) The article explains how Iceland has one of the most genetically homogeneous populations in Europe.

(i) State what is meant by the following genetic terms.

1. Gene

.....

2. Allele

.....

[2]

(ii) Allele frequencies will remain constant in a stable population. However, population changes can alter allele frequencies.

For each of the following events, give the term used to describe the effect on allele frequencies.

1. Iceland was settled by a relatively small number of explorers in the 9th century.

.....

2. The Icelandic population decreased due to the two waves of plagues during the 15th century, smallpox in the early 1700s and a volcanic eruption in 1783.

.....

[2]

(iii) Explain how the events described in (ii) resulted in the low genetic diversity of the Icelandic population.

.....

.....

.....

.....

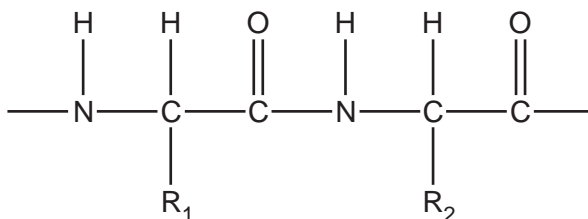
..... [2]

5

- 2 Antimicrobial peptides (AMPs) are peptides found in animals and plants that destroy a wide range of pathogenic bacteria, fungi and viruses.

The α -defensins are a group of AMPs that contain 18–45 amino acids.

- (a) The diagram below shows part of the structure of an α -defensin molecule.



- (i) Draw a circle around the part of the structure that represents the peptide bond.

[The response to this question should be drawn on the diagram.]

[1]

- (ii) Name the chemical reaction that joins the amino acids together in a peptide.

..... [1]

- (b) A student used paper chromatography to investigate the amino acid composition of a sample of α -defensin.

- (i) Suggest the importance of the following steps in the paper chromatography procedure.

1. The sample of α -defensin was heated with hydrochloric acid.

.....

2. Care was taken not to touch the paper with fingers.

.....

[2]

6

(ii) Fig. 2 shows the results of one analysis.

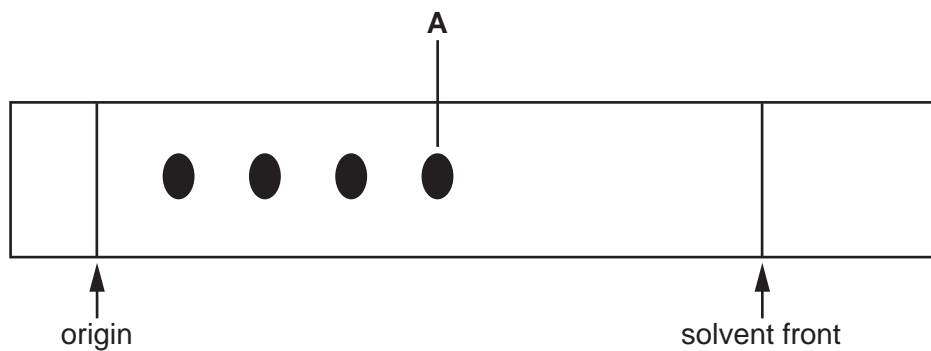


Fig. 2

Table 2 shows R_f values for six different amino acids.

Amino acid	R_f
Arginine	0.16
Cysteine	0.37
Glutamic acid	0.31
Isoleucine	0.53
Methionine	0.51
Tyrosine	0.55

Table 2

Using Fig. 2 and Table 2, calculate the R_f value for spot **A** and identify the amino acid.

R_f value for spot **A** =

amino acid =

[2]

8

- (d) The β -defensins are another group of peptides found in the male reproductive tract.

One β -defensin is coded for by the *DEFB126* gene. Men who are homozygous for a mutation in *DEFB126* have a normal sperm count with normal motility, but the sperm have a reduced ability to penetrate hyaluronic acid (a model for female cervical mucus).

- (i) Suggest why it is thought that the *DEFB126* mutation reduces the chance of successful fertilisation.

.....

.....

.....

.....

..... [2]

- (ii) It is estimated that 22% of all Europeans are homozygous for the recessive mutant form of *DEFB126*.

Calculate the allele frequency of the mutant form of *DEFB126* in all Europeans (men and women).

Use the Hardy-Weinberg equations:

$$p + q = 1 \qquad p^2 + 2pq + q^2 = 1$$

Give your answer to **2 significant figures**.

frequency = [2]

- (iii) The fact that the *DEFB126* mutation reduces the chances of successful fertilisation means that, in theory, the allele frequency should have fallen.

Suggest why the allele frequency of the *DEFB126* mutation remains high.

.....

..... [1]

9

- 3 The extracellular matrix (ECM) can be thought of as the 'glue' that holds together the cells in a tissue. The ECM consists of water, proteins and polysaccharides.

Matrix metalloproteinases (MMPs) are a group of proteases that hydrolyse proteins in the ECM.

Each MMP consists of a single polypeptide chain.

- (a) For each of the following features of MMP structure, draw a line connecting the feature to the correct description.

Feature	Description
The active site of MMP contains a Zn^{2+} ion that is required for substrate binding.	Primary structure
The enzyme contains a β -pleated sheet and three α -helices.	Secondary structure
The amino acid histidine occurs in three places in the sequence making up the active site of all MMPs.	Tertiary structure
	Competitive inhibition
	Cofactor

[3]

10

(b) MMP activity has been linked to the development of cancer.

Women with tumours in their breasts will often have biopsies (tissue samples) taken and tested to see if the tumours are malignant (cancerous) or benign (non-cancerous).

In one study, the total MMP activity was measured in breast biopsies that were classed as either:

- benign
- malignant grade I (the least malignant)
- malignant grade II
- malignant grade III (the most malignant).

Table 3 shows the results of this study.

Tumour classification	MMP activity (units per μg protein)
Benign	6.58
Malignant grade I	1.34
Malignant grade II	6.80
Malignant grade III	32.29

Table 3

(i) The researchers carried out a statistical test to compare the MMP activity in grade III tumours with the mean activity in all other tumours (benign, grade I and grade II).

Suggest a null hypothesis that the researchers would have used.

.....
 [1]

(ii) The result of this test gave $p < 0.0001$.

Use the words 'probability' and 'chance' to describe the conclusion the researchers would make.

.....

 [1]

- 4 In the 1950s, Melvin Calvin studied the series of reactions that we now know as the Calvin Cycle.

Calvin's 'lollipop' experiment was so called because it used a lollipop-shaped glass flask containing single-celled photosynthetic algae growing in culture.

A diagram of the apparatus Calvin used is shown in Fig. 4.1.

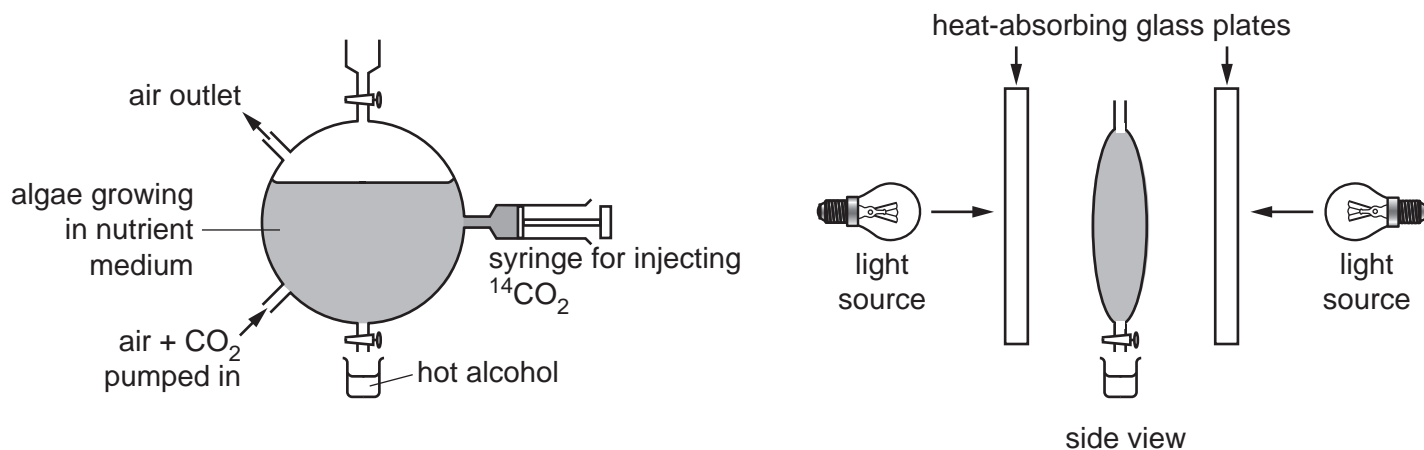


Fig. 4.1

The algae were illuminated for 30 minutes before the start of the experiment. Air and carbon dioxide were pumped into the suspension throughout.

At time zero, a small amount of radioactively-labelled carbon dioxide ($^{14}\text{CO}_2$) was injected from the syringe.

At intervals after addition of the $^{14}\text{CO}_2$, samples of the suspension were run off into hot alcohol before being analysed.

(a) Suggest the reasons for the following steps in the experiment.

1. Illuminating the algae for 30 minutes before the start of the experiment.

.....
.....

2. Placing heat-absorbing glass between the light sources and the flask.

.....
.....

3. Running each sample into hot alcohol before analysis.

.....
.....

[3]

14

- (b) Calvin measured the relative radioactivity in various compounds at 2 seconds, 10 seconds and 30 seconds after addition of the $^{14}\text{CO}_2$.

The results of the analysis are shown in Table 4. Presence of radioactivity is represented in the table as '+' and no radioactivity as '-'.

Organic compound	Relative radioactivity present at time after addition of $^{14}\text{CO}_2$		
	2 s	10 s	30 s
Amino acids	-	-	+
Glycerate-3-phosphate (GP)	+	+	+
Sucrose	-	-	+
Sugar phosphates	-	-	+
Triose phosphate (TP)	-	+	+

Table 4

- (i) Name the enzyme responsible for the initial incorporation of radioactive CO_2 into organic compounds.

..... [1]

- (ii) Use the results in Table 4 to explain the order in which the organic compounds are produced during photosynthesis.

.....

.....

.....

.....

.....

.....

.....

.....

.....

..... [3]

15

- (c) Calvin isolated the compounds formed at the earliest time points and found they contained three carbon atoms.

This led him to conclude that the first reaction in the cycle was between CO_2 and a 2-carbon compound.

Explain why Calvin's conclusion was **incorrect**.

.....

.....

.....

.....

..... [2]

Question 4(d) begins on page 16

(d) Fig. 4.2 shows the relationship between the net rate of photosynthesis and light intensity in a plant growing at atmospheric CO₂ concentration (0.04%).

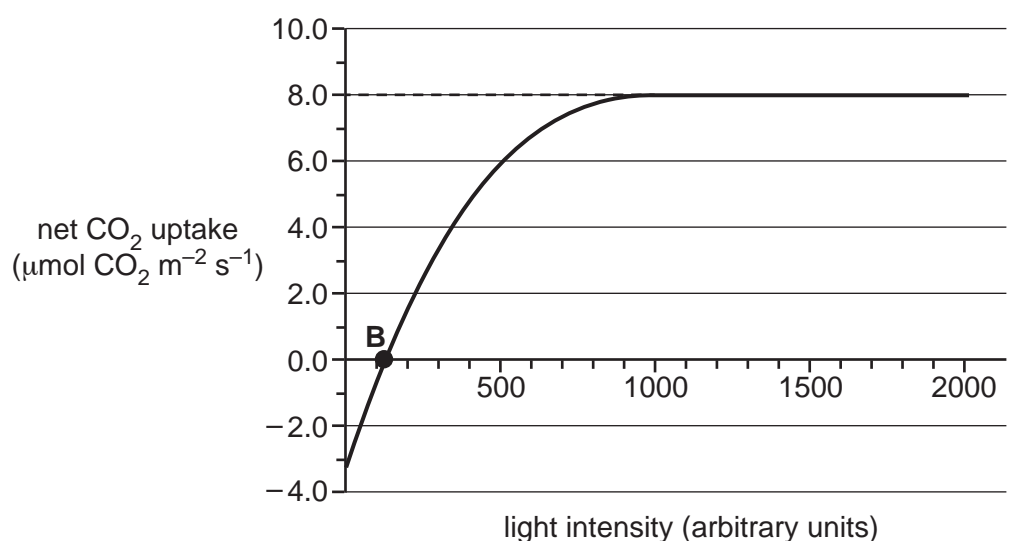


Fig. 4.2

(i) The plant had a leaf area of 0.97 m².
 Calculate the maximum amount of CO₂ that the plant can take up in 1 minute.

maximum amount of CO₂ taken up in 1 minute = μmol [2]

(ii) Explain the significance of the point labelled **B** on Fig. 4.2.

 [1]

18

5 Fig. 5 shows a vertical section through the human eye.

The regions labelled **C**, **D** and **E** are affected by degenerative diseases of the eye associated with ageing.

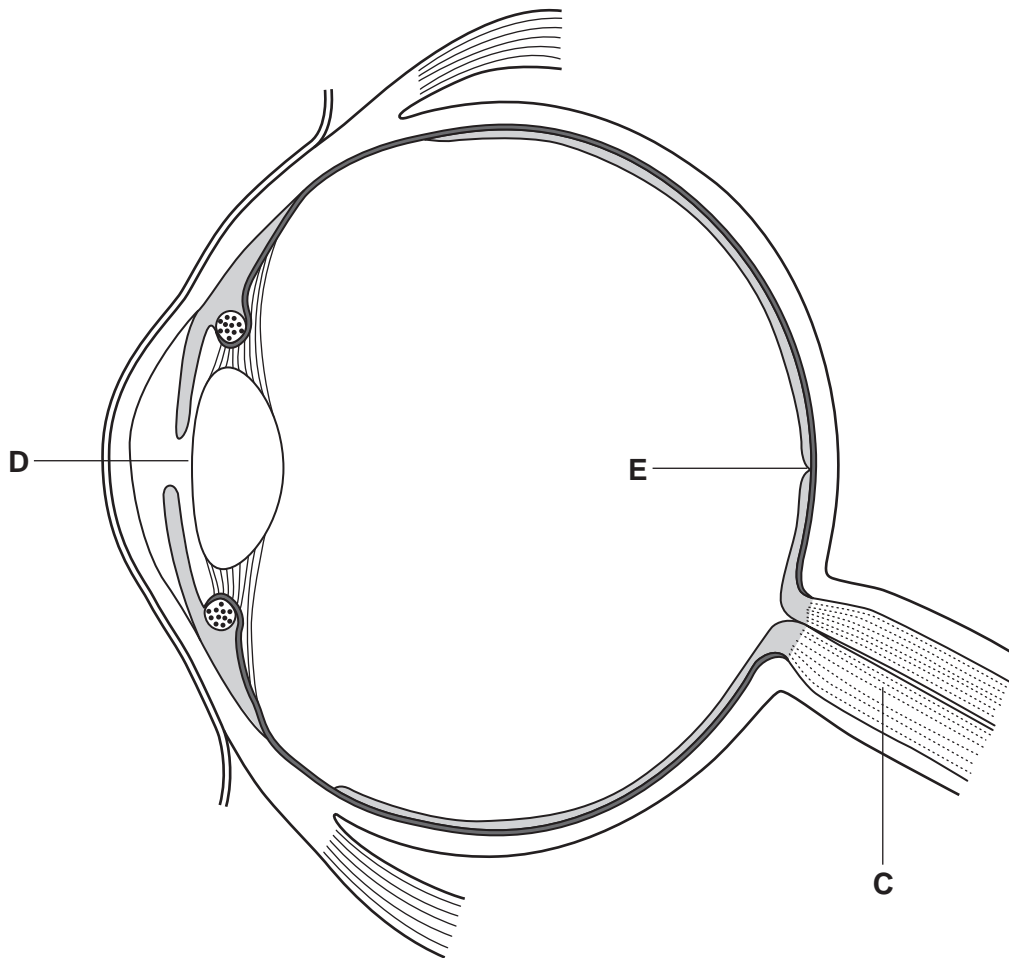


Fig. 5

- (a) (i) For regions **C** and **D** in Fig. 5, name the degenerative disease **and** explain why vision would be affected.

Region **C**

name of disease

explanation

.....

.....

.....

Region **D**

name of disease

explanation

.....

.....

.....

[4]

- (ii) Ranibizumab is a monoclonal antibody-based drug that inhibits the growth of new blood vessels.

Suggest how ranibizumab would be effective in treating a degenerative disease that affects the region labelled **E** in Fig. 5.

.....

.....

.....

.....

..... [2]

(b) The retina contains light-sensitive photoreceptor cells.

(i) Explain why photoreceptor cells in the retina are described as transducers.

.....
 [1]

(ii) Rod cells undergo various changes when they are stimulated by light.

Complete the following table by writing 'Rest' or 'Light' in the space provided to indicate whether the description refers to a rod cell at rest or when stimulated by light.

The first row has been completed for you.

Process in rod cell	Rest or Light
Rhodopsin is broken down to form opsin and <i>trans</i> -retinal	Light
Rod cell membrane is hyperpolarised	
Neurotransmitter is released by exocytosis from the rod cell into the synaptic cleft	
Sodium ion channels open	

[2]

(c) Red-green colour blindness is a sex-linked inherited disorder that affects mostly males.

Suggest why red-green colour blindness affects mostly males.

.....

 [2]

6 (a) Meiosis is the nuclear division that forms gametes.

(i) Explain why meiosis is referred to as a **reduction** division.

.....
..... [1]

(ii) Errors in meiosis can lead to chromosome mutations.

State the name of an event in meiosis that leads to chromosome mutations.

..... [1]

(iii) State the name of one syndrome caused by a chromosome mutation.

..... [1]

(iv) Some cancers that develop later in life are caused by chromosome mutation.

Suggest why these cancers are unlikely to be the result of errors in meiosis.

.....
..... [1]

7 (a) Fig. 7 is a diagram of a maize plant showing the male and female flowers.

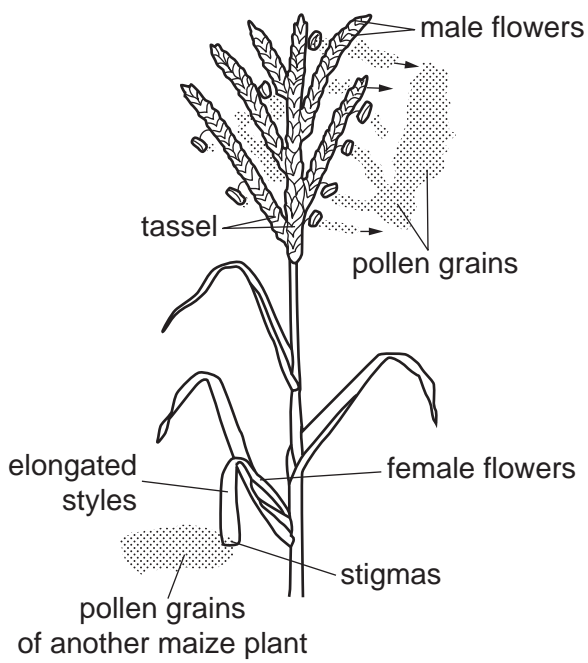


Fig. 7

Using the information in Fig. 7, identify **one** way in which maize is adapted for wind pollination.

.....
.....
..... [1]

(b) When maize pollen grains land on the stigma of a maize plant, a pollen tube grows towards the ovule.

Describe the events that lead to the formation of the embryo **and** the endosperm.

.....
.....
.....
.....
.....
.....
.....
.....
..... [3]

24

- (c) As well as being a popular food (corn on the cob), maize is a useful model for studying patterns of inheritance.

Each maize cob contains hundreds of seeds known as kernels.

In maize, one gene determines the colour of the kernels, which is either yellow or colourless.

Another gene determines the amount of endosperm in each kernel. Kernels filled with endosperm are smooth whereas kernels with shrunken endosperm appear wrinkled.

- (i) Two pure breeding strains of maize were crossed. One strain had smooth yellow kernels. The other strain had wrinkled colourless kernels.

All the kernels of the offspring (F_1) were smooth and yellow.

The plants in the F_1 generation were then crossed with plants that had pure-bred wrinkled colourless kernels.

State the parental genotypes and gametes of this cross.

Use the following to represent the alleles:

- **A** and **a** for colour (yellow or colourless)
- **B** and **b** for appearance (smooth or wrinkled).

parental genotypes: ×

gametes:

[2]

- (ii) Using a genetic diagram and your answer to (c)(i), predict the phenotypic ratio that you would expect from the second cross.

phenotypic ratio: [2]

25

(iii) The actual results of the second cross are shown in Table 7.1.

Phenotype	Number of kernels
Smooth yellow	275
Wrinkled yellow	277
Smooth colourless	235
Wrinkled colourless	213

Table 7.1

Calculate χ^2 for these data.

Use the formula: $\chi^2 = \sum \frac{(f_o - f_e)^2}{f_e}$

You may use the table below for working out.

$\chi^2 = \dots\dots\dots$ [3]

(iv) Table 7.2 shows a χ^2 probability table.

Degrees of freedom	Probability (p)				
	0.50	0.10	0.05	0.01	0.001
1	0.46	2.71	3.84	6.64	10.83
2	1.39	4.61	5.99	9.21	13.82
3	2.37	6.25	7.82	11.35	16.27
4	3.36	7.78	9.49	13.28	18.47

Table 7.2

What can you conclude about the results shown in Table 7.1 based on the χ^2 value you calculated in (c)(iii)?

.....

.....

..... [1]

(v) Suggest an explanation for your conclusion in part (iv).

.....

.....

.....

.....

..... [2]

END OF QUESTION PAPER

ADDITIONAL ANSWER SPACE

If additional space is required, you should use the following lined page(s). The question number(s) must be clearly shown in the margin(s).

A large area of lined paper for writing answers. It features a vertical solid line on the left side, creating a margin. The rest of the page is filled with horizontal dotted lines, providing space for writing. The lines are evenly spaced and extend across the width of the page.

A large area of the page is filled with horizontal dotted lines, providing a space for writing answers. A solid vertical line runs down the left side of this area, approximately one-fifth of the way across the page.



Copyright Information

OCR is committed to seeking permission to reproduce all third-party content that it uses in its assessment materials. OCR has attempted to identify and contact all copyright holders whose work is used in this paper. To avoid the issue of disclosure of answer-related information to candidates, all copyright acknowledgements are reproduced in the OCR Copyright Acknowledgements Booklet. This is produced for each series of examinations and is freely available to download from our public website (www.ocr.org.uk) after the live examination series.

If OCR has unwittingly failed to correctly acknowledge or clear any third-party content in this assessment material, OCR will be happy to correct its mistake at the earliest possible opportunity.

For queries or further information please contact The OCR Copyright Team, The Triangle Building, Shaftesbury Road, Cambridge CB2 8EA.

OCR is part of the Cambridge Assessment Group; Cambridge Assessment is the brand name of University of Cambridge Local Examinations Syndicate (UCLES), which is itself a department of the University of Cambridge.